



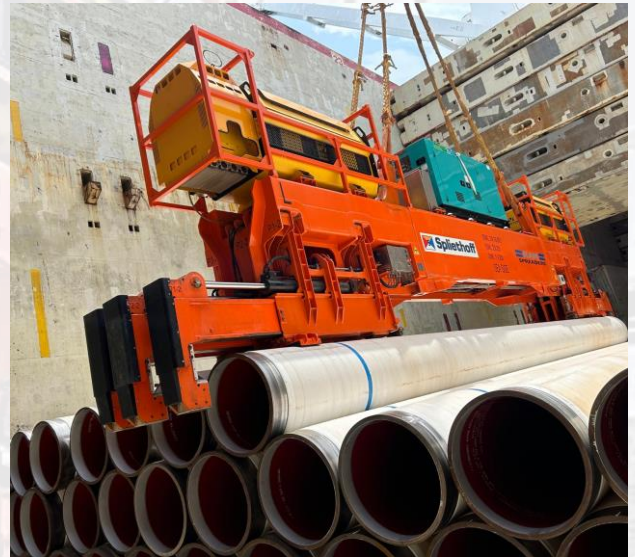
RAM Pipe spreaders go into operation

RAM Auto pipe spreader goes into operation for the Spliethoff Group.

Spliethoff Shipping approached RAM to help with a major offshore project, handling pipes between Indonesia and Australia. Working together with Spliethoff, RAM produced a universal pipe handling spreader.

The RAM “Octo” pipe-handling spreader is designed to allow the handling of a huge range of pipes from:

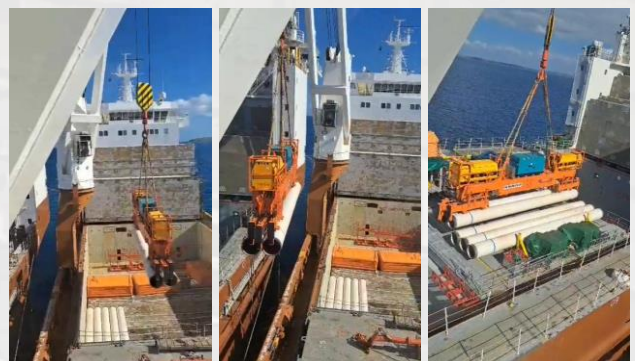
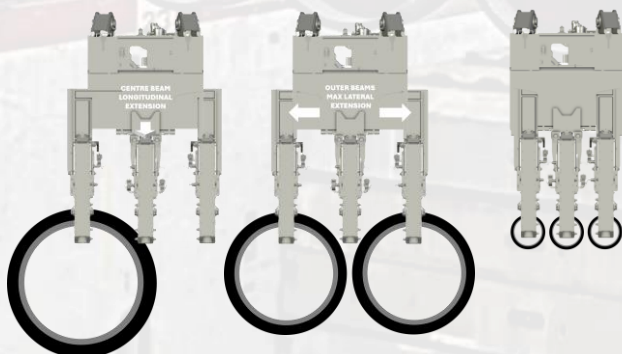
- 1 to 3 pipes.
- Diameters of 16 to 60 inches (40 to 152cm).
- Between 11.8 and 12.7 meters in length.



Handling Pipes at Quay and Ship to Ship

RAM Octo will first be deployed at the port in Batam, Indonesia, loading the offshore pipes from the quayside into the shipping vessel's hatch.

Another RAM Octo on the shipping vessel crane then transfers the pipes into a transshipment vessel near the coast in Northwest Australia before being transferred again into the pipelaying vessel.





Unique Features

Rotation Control System

Due to the nature of the load and harsh environment, an essential feature of the RAM Octo is its rotational control system that controls the rotation of the pipes being handled, making for fast and safe operations.

The ability to quickly control rotation (up to 360 degrees in less than 1 minute) allows accurate placement of pipes, saving time and allowing the operator to control the load at a safe distance without the need for ropes or slings.

Soft Touch Grippers

A crucial feature of RAM Octo is its soft touch grippers and pads on all contact points between 'Octo' and the pipes. Mechanical sensors on the soft touch end grippers send a signal to the operator's remote control when the pipes are securely clamped longitudinally.

Load Weighing System

Another safety feature is RAM Octo's ability to detect load immediately before lifting. Load cells in the end gripper detect when the load is applied when the padded pipe fork engages with the underside of the pipe, sending a signal to the operator that it is safe to lift.

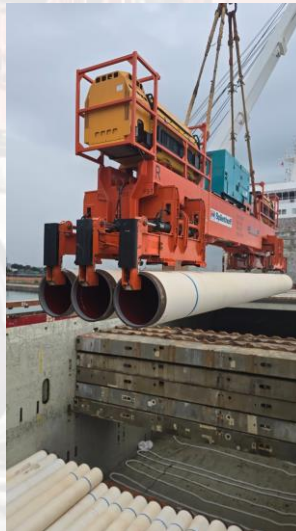
Pipe Adjustments

Independent longitudinal and lateral adjustments to each pair of telescopic arms allow the operator to make fine adjustments when encountering out-of-alignment pipes by lifting and correcting their alignment during the lifting process.



Innovative project for an innovative customer

The pipe spreaders' have been purchased by Spliethoff Shipping, which plays one small part in the innovations across this project regarding safety and productivity.



RAM commented during the project launch,

“We have worked with Spliethoff to provide a safe and innovative solution to load pipes. This system is one of several innovations in this project to make it safe and reliable”